

INSTALLING COLOR PROFILES

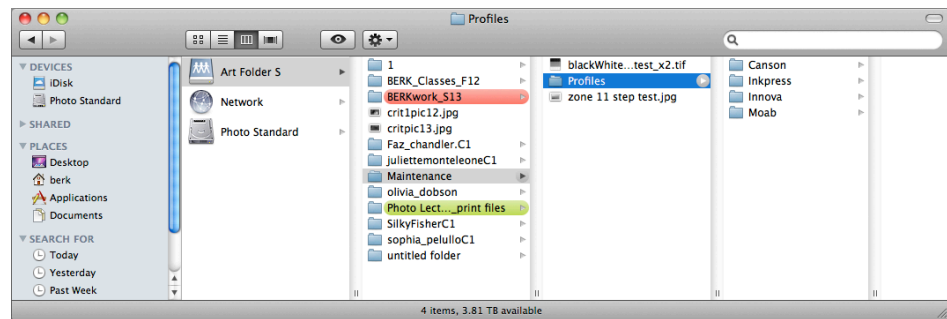
It is easy to download Color Profiles for the Digital papers you are using in the Tyler Studio if they are already not on the computer you are using. First you have to go to the manufacturer's web site and download the desired profiles. Then they will have to be copied into the Library>ColorSync>Profiles folder.

DOWNLOADING PROFILES

- go to the Paper Manufacturer's site
- do a search for the name of the paper and the word 'profiles downloads'
 - e.g. innova profiles download
- download the desired profile(s)
- find the appropriate printer
- then find the specific paper
- click the [DOWNLOAD] button
- save to Desktop> Downloads folder
 - (where they might end up automatically anyway...)

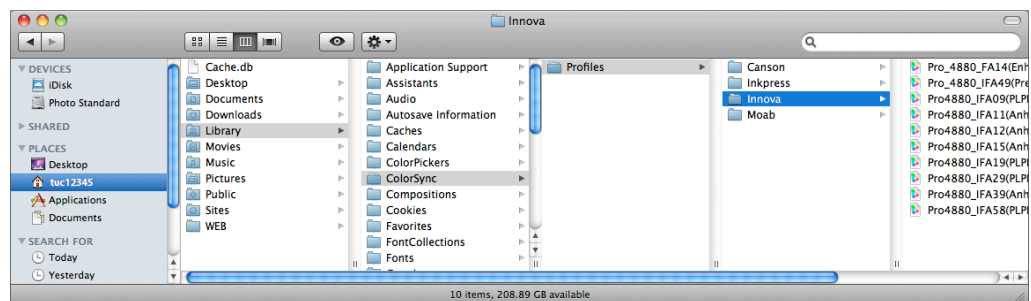
SAVING PROFILES

- copy the file(s) into the Art Folder Maintenance> Profiles folder
- this will allow other people to have access to the same profiles



INSTALLING PROFILES

- copy the file(s) from the Art Folder as shown above, into yourHomeFolder> Library> ColorSync> Profiles



restart Photoshop so it can find the new profile(s)

print as usual...

USING COLOR PROFILES

PRIVATE USE

When you log onto a computer at Temple University, the MacIntosh operating system creates a new user account for you. This gives each user their own private workspace. The files within this space are saved to a private section of the hard drive and are not accessible to other users. This ensures privacy and security. This also allows each user to set certain System Preference and Application Preferences as they prefer.

After you download these profiles, these profiles will be saved in the Library in your private account and will only be available to *you* when you log in. If someone logs on to the same computer you have been using, the profiles *you* have loaded will not be available for them. If you print on some other computer, you will have to configure these profiles all over again. This is why we keep a copy of all downloaded profiles in the Art Folder> Maintenance> Profiles folder for future use.

PUBLIC USE

Eventually we will gather all profiles and add them to the Library folder on the main hard drive so they will always be available to everyone without all this copying. But this will only apply to the computers within Tyler School of Art. This will continue to be the best way to print accurately at all external sites.